

2011-2012 Gordon School picture calendar

The Gordon School picture calendar will not be distributed to every family this year. We are posting the calendar on the website for you to print out and assemble at home. The format is the same as previous years, with a picture above the numbered calendar for each month. An example of an assembled picture calendar is posted on the bulletin board in the main hallway.

How to assemble your Gordon picture calendar:

Print out all the sheets - colour or black and white, as you wish.
Lay the stack of sheets on a table.

Arrange the Cover page of the calendar (page 1) back to back with the September photo page. Make sure the top corners of the September photo page are behind the bottom corners of the Cover page (one page will look upside-down)
Staple or tape these two corners together (or wait til all the pages are arranged and do all the stapling at once).

Arrange the September calendar page (page 3) back to back with the October photo page. Make sure the top corners of the October photo page are behind the bottom corners of the September calendar page (as before, one page will look upside-down)
Staple or tape these two corners together (or staple later).

Arrange the October calendar page (page 5) back to back with the November photo page. Make sure the top corners of the November photo page are behind the bottom corners of the October calendar page.
Staple or tape these two corners together (or staple later).

Continue through the months, until the pages backing each other have two of their corners stapled/taped together. Continue with the handbook pages, stapling/taping the adjacent pages together at two of their corners (the handbook will read sideways).

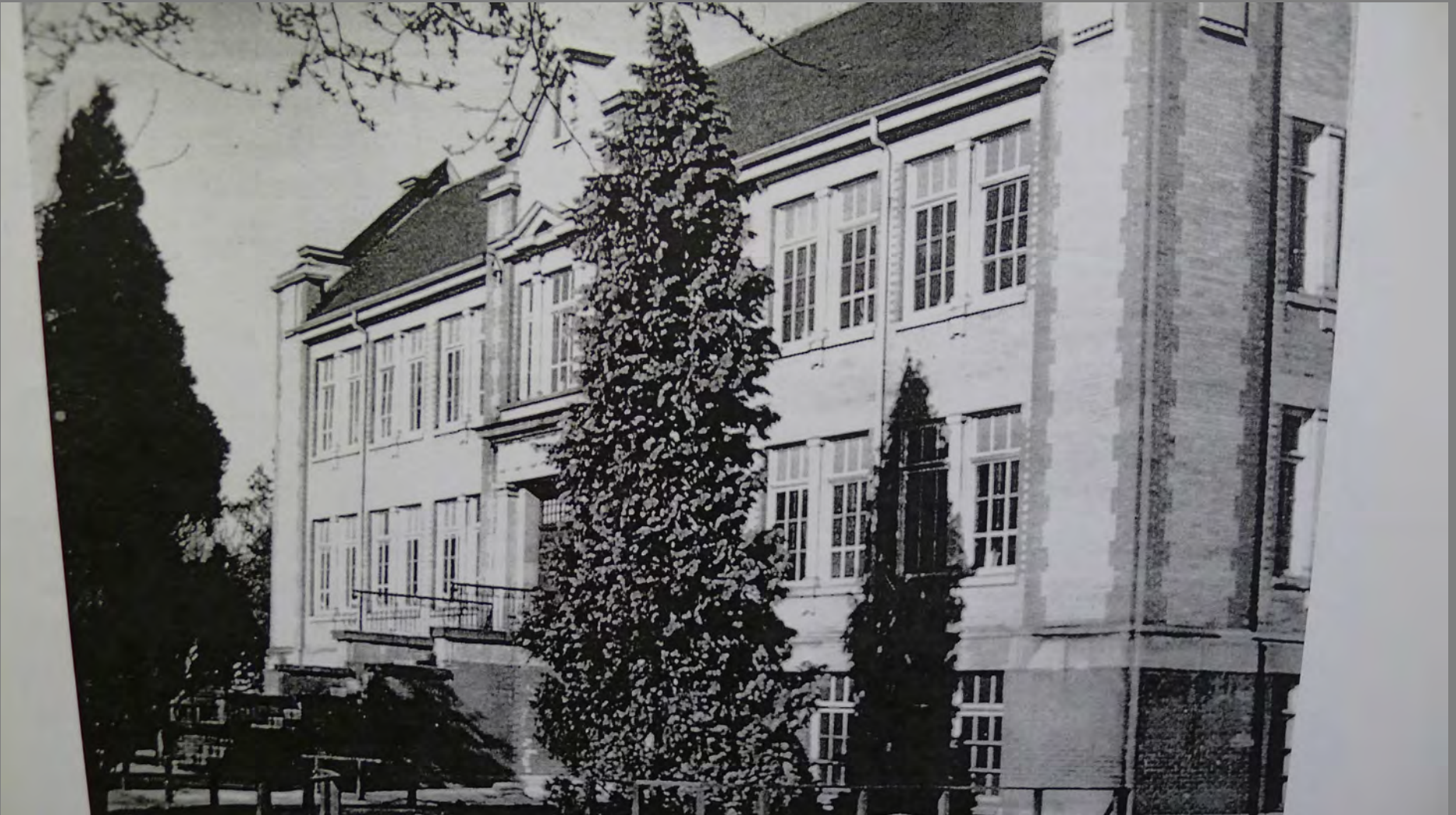
Lay the entire stack of pages down with the Cover page of the Calendar on top.
Staple several times across the top to hold all the pages together in one calendar.

Use a binder clip to hold and hang the calendar.

General Gordon Elementary 2011 - 2012 Calendar & Handbook

Choose to ...

Be Kind



Be Fair

Be Safe

September 2011 septembre

| Sun dimanche | Mon lundi | Tue mardi | Wed mercredi | Thu jeudi | Fri vendredi | Sat samedi |
|-----------------|--------------------------|---------------------------------|--|--------------|---|---------------|
| 4 | 5 | 6 <i>First Day of School</i> | 7 | 8 | 9 <i>Pro-D Day</i> | 10 |
| 11 | 12 | 13 | 14 | 15 | 16 | 17 |
| 18 | 19 | 20 | 21 <i>Meet the Parents 6:00-7:00 pm</i> | 22 | 23 | 24 |
| 25 | 26 <i>PAC Meeting</i> | 27 | 28 | 29 | 30 <i>Cash Card Orders</i> | |
| | | | | | Gordon School 604-713-5403 JKC at Bayview 604-736-4080 JKC at Gordon 604-736-0566 www.gordonelementary.ca | |

October 2011 octobre

| Sun dimanche | Mon lundi | Tue mardi | Wed mercredi | Thu jeudi | Fri vendredi | Sat samedi |
|---|---------------------------|--|--|--------------|----------------------------------|---------------|
| Gordon School 604-713-5403 JKC at Bayview 604-736-4080 JKC at Gordon 604-736-0566 www.gordonelementary.ca | | | | | | 1 |
| 2 | 3 <i>Photo Day</i> | 4 | 5 | 6 | 7 <i>District Closure Day</i> | 8 |
| 9 | 10 <i>Thanksgiving</i> | 11 <i>Goal Setting Conferences. Dismissal 2:00 pm</i> | 12 <i>Goal Setting Conferences. Dismissal 2:00 pm</i> | 13 | 14 | 15 |
| 16 | 17 | 18 | 19 | 20 | 21 <i>Pro-D Day</i> | 22 |
| 23 | 24 | 25 <i>PAC Meeting</i> | 26 | 27 | 28 <i>Cash Card Orders</i> | 29 |
| 30 | 31 <i>Pro-D Day</i> | | | | | |

November 2011 novembre



November 2011 novembre

| Sun dimanche | Mon lundi | Tue mardi | Wed mercredi | Thu jeudi | Fri vendredi | Sat samedi |
|-----------------|-----------------------------------|---------------------------|-----------------|---|-------------------------------|---------------|
| | | 1 <i>Pro-D Day</i> | 2 | 3 | 4 | 5 |
| 6z | 7 | 8 | 9 | 10 | 11 <i>Remembrance Day</i> | 12 |
| 13 | 14 <i>District Closure Day</i> | 15 <i>Immunization</i> | 16 | 17 | 18 | 19 |
| 20 | 21 <i>Vision Screening</i> | 22 | 23 | 24 | 25 <i>Cash Card Orders</i> | 26 |
| 27 | 28 <i>PAC Meeting</i> | 29 | 30 | Gordon School 604-713-5403 JKC at Bayview 604-736-4080 JKC at Gordon 604-736-0566 www.gordonelementary.ca | | |

December 2011 decembre



December 2011 decembre

| Sun dimanche | Mon lundi | Tue mardi | Wed mercredi | Thu jeudi | Fri vendredi | Sat samedi |
|--|-------------------------------------|--------------|-----------------|----------------------------|------------------------------|---------------|
| Gordon School 604-713-5403 JKC at Bayview 604-736-4080 JKC at Gordon 604-736-0566 www.gordonelementary.ca | | | | 1 | 2 <i>Cash Card Orders</i> | 3 |
| 4 | 5 | 6 | 7 | 8 <i>Winter Concert</i> | 9 | 10 |
| 11 | 12 | 13 | 14 | 15 | 16 | 17 |
| 18 | 19 <i>Winter Vacation Starts</i> | 20 | 21 | 22 | 23 | 24 |
| 25 | 26 | 27 | 28 | 29 | 30 | 31 |

January 2012 janvier



January 2012 janvier

| Sun dimanche | Mon lundi | Tue mardi | Wed mercredi | Thu jeudi | Fri vendredi | Sat samedi |
|-----------------|--------------------------|----------------------------|---------------------------|--------------|---|---------------|
| 1 | 2 | 3 <i>School Reopens</i> | 4 | 5 | 6 | 7 |
| 8 | 9 | 10 | 11 | 12 | 13 | 14 |
| 15 | 16 | 17 | 18 | 19 | 20 | 21 |
| 22 | 23 | 24 | 25 <i>Immunization</i> | 26 | 27 <i>Cash Card Orders</i> | 28 |
| 29 | 30 <i>PAC Meeting</i> | 31 | 28 | | Gordon School 604-713-5403 JKC at Bayview 604-736-4080 JKC at Gordon 604-736-0566 www.gordonelementary.ca | |

February 2012 février



February 2012 février

| Sun dimanche | Mon lundi | Tue mardi | Wed mercredi | Thu jeudi | Fri vendredi | Sat samedi |
|-----------------|----------------------------------|-------------------|-----------------|--------------|---|---------------|
| 1 | | | 1 | 2 | 3 <i>District Closure Day</i> | 4 |
| 5 | 6 <i>District Closure Day</i> | 7 | 8 | 9 | 10 | 11 |
| 12 | 13 | 14 | 15 | 16 | 17 <i>Pro-D Day</i> | 18 |
| 19 | 20 | 21 | 22 | 23 | 24 <i>Cash Card Orders</i> | 25 |
| 26 | 27 | 28 PAC Meeting | 29 | | Gordon School 604-713-5403 JKC at Bayview 604-736-4080 JKC at Gordon 604-736-0566 www.gordonelementary.ca | |

March 2012 mars

| Sun dimanche | Mon lundi | Tue mardi | Wed mercredi | Thu jeudi | Fri vendredi | Sat samedi |
|---|--|--|--|--|--|-----------------------------|
| Gordon School 604-713-5403 JKC at Bayview 604-736-4080 JKC at Gordon 604-736-0566 www.gordonelementary.ca | | | | <i>1</i> | <i>2</i> | <i>3</i> |
| <i>4</i> | <i>5</i> | <i>6</i> | <i>7</i> | <i>8</i> | <i>9</i> | <i>10</i> |
| <i>11</i> | <i>12</i> <i>District Closure Day</i> | <i>13</i> <i>District Closure Day</i> | <i>14</i> <i>District Closure Day</i> | <i>15</i> <i>District Closure Day</i> | <i>16</i> <i>District Closure Day</i> | <i>17</i> |
| <i>18</i> | <i>19</i> <i>Spring Break</i> | <i>20</i> <i>Spring break</i> | <i>21</i> <i>Spring break</i> | <i>22</i> <i>Spring break</i> | <i>23</i> <i>Spring break</i> | <i>24</i> |
| <i>25</i> | <i>26</i> | <i>27</i> | <i>28</i> | <i>29</i> | <i>30</i> <i>Cash Card Orders</i> | <i>31</i> |

April 2012 avril



April 2012 avril

| Sun dimanche | Mon lundi | Tue mardi | Wed mercredi | Thu jeudi | Fri vendredi | Sat samedi |
|-----------------|---------------------------|--------------|---|--------------|---|---------------|
| 1 | 2 <i>PAC Meeting</i> | 3 | 4 <i>Goal Setting Conferences. Dismissal 2:00 pm</i> | 5 | 6 <i>Good Friday</i> | 7 |
| 8 | 9 <i>Easter Monday</i> | 10 | 11 | 12 | 13 | 14 |
| 15 | 16 | 17 | 18 | 19 | 20 <i>Pro-D Day</i> | 21 |
| 22 | 23 | 24 | 25 <i>Volunteer Tea</i> | 26 | 27 <i>Cash Card Orders</i> | 28 |
| 29 | 30 | 31 | | | Gordon School 604-713-5403 JKC at Bayview 604-736-4080 JKC at Gordon 604-736-0566 www.gordonelementary.ca | |

Mayy 2012 mai

| Sun dimanche | Mon lundi | Tue mardi | Wed mercredi | Thu jeudi | Fri vendredi | Sat samedi |
|-----------------|---|-------------------------|-----------------|-------------------------|--|--------------------------|
| | | 1 <i>PAC Meeting</i> | 2 | 3 | 4 | 5 <i>SPRING FLING</i> |
| 6 | 7 | 8 | 9 | 10 | 11 | 12 |
| 13 | 14 | 15 | 16 | 17 <i>Sports Day</i> | 18 <i>District Closure Day</i> | 19 |
| 20 | 21 <i>Victoria Day</i> | 22 | 23 | 24 | 25 <i>Cash Card Orders</i> | 26 |
| 27 | 28 <i>Immunization</i> <i>PAC Meeting</i> | 29 | 30 | 31 | Gordon School 604-713-5403 JKC at Bayview 604-736-4080 JKC at Gordon 604-736-0566 www.gordonelementary.ca | |

June 2012 juin



June 2012 juin

| Sun dimanche | Mon lundi | Tue mardi | Wed mercredi | Thu jeudi | Fri vendredi | Sat samedi |
|---|---|----------------------------|---|--|-------------------------------|---------------|
| Gordon School 604-713-5403 JKC at Bayview 604-736-4080 JKC at Gordon 604-736-0566 www.gordonelementary.ca | | | | | 1 | 2 |
| 3 | 4 | 5 | 6 <i>Welcome to Kindergarten Staff appreciation lunch</i> | 7 | 8 | 9 |
| 10 | 11 | 12 <i>Grad Ceremony</i> | 13 | 14 | 15 <i>Cash Card Orders</i> | 16 |
| 17 | 18 <i>Welcome to Grade 6 Late French Immersion</i> | 19 | 20 | 21 | 22 <i>Beach Day</i> | 23 |
| 24 | 25 | 26 | 27 | 28 <i>Last Day of School. Students dismissed at 2:00 pm</i> | 29 <i>Admin Day!</i> | 30 |

July 2012 juillet



July 2012 juillet

| Sun dimanche | Mon lundi | Tue mardi | Wed mercredi | Thu jeudi | Fri vendredi | Sat samedi |
|-------------------------------|----------------------|----------------------|-------------------------|----------------------|--|-----------------------|
| <i>1</i> <i>Canada Day</i> | <i>3</i> | <i>4</i> | <i>5</i> | <i>6</i> | <i>7</i> | <i>8</i> |
| <i>9</i> | <i>10</i> | <i>11</i> | <i>12</i> | <i>13</i> | <i>14</i> | <i>15</i> |
| <i>16</i> | <i>17</i> | <i>18</i> | <i>19</i> | <i>20</i> | <i>21</i> | <i>22</i> |
| <i>23</i> | <i>24</i> | <i>25</i> | <i>26</i> | <i>27</i> | <i>28</i> | <i>29</i> |
| <i>30</i> | <i>31</i> | | | | Gordon School 604-713-5403 JKC at Bayview 604-736-4080 JKC at Gordon 604-736-0566 www.gordonelementary.ca | |

August 2012 août



Kitsilano Boys Band (Reunion)

August 2012 août

| Sun dimanche | Mon lundi | Tue mardi | Wed mercredi | Thu jeudi | Fri vendredi | Sat samedi |
|-------------------------------|----------------------------|----------------------------|-------------------------------|----------------------------|---|-----------------------------|
| | | 1 | 2 | 3 | 4 | 5 |
| 6 <i>BC Day</i> | 7 | 8 | 9 | 10 | 11 | 12 |
| 13 | 14 | 15 | 16 | 17 | 18 | 19 |
| 20 | 21 | 22 | 23 | 24 | 25 | 26 |
| 27 | 28 | 29 | 30 | 31 | Gordon School 604-713-5403 JKC at Bayview 604-736-4080 JKC at Gordon 604-736-0566 www.gordonelementary.ca | |

Gordon School Guiding Beliefs

We believe that Gordon School should provide an environment that is 'needs satisfying' for all the people who work here.

We believe that Gordon School should be a safe, pleasant and clean place where people cooperate, are respectful, friendly, kind and courteous; where we can feel good about ourselves and where all have equal rights, privileges and responsibilities.

We believe that all who work at Gordon should have a say in what is learned in an atmosphere of open communication that leads to: meaningful relationships; useful and satisfying work; an understanding of what quality is; and, finally, an ability to self-evaluate.

We believe that all who work at Gordon School can and should make choices about what and how they learn and exercise the responsibility that goes with making choices without interfering with the ability of others to make choices

We believe that Gordon should be a place where people enjoy spending their time; where we can take pleasure in the company of others; where we can learn, be creative and challenge ourselves mentally and physically.

School Hours of Operation

| | |
|----------------------------|---|
| 8:40 a.m. | Playground supervision begins |
| 8:55 a.m. | Warning Bell |
| 9:00 a.m. | Morning classes begin (Grades 1-7 and morning Kindergarten) |
| 10:30-10:45 a.m. | Recess (all) |
| 12:15 p.m. | Lunch begins |
| 12:30 p.m. | Clubs and Activities |
| 1:00 p.m. | Bell- Afternoon classes begins |
| 3:01 p.m. dismissal | Dismissal Grades 1-7 and afternoon Kindergarten |
| 3:01-3:16 P.M. | Playground Supervision (15 minutes) |

Absenteeism/ Lateness

If your child is absent from school or late coming to school please call 604-713-6000 (when answered, press 2880 without waiting for a prompt and leave a message). This Safe Arrival Program, as its name suggest has been set up by volunteer parents each morning to ensure that your child arrives safely at school. If you would like your child to be part of this program and are able to volunteer your help please contact our PAC chair, Ingrid Sulston

Student Sign-out

Any child arriving at school after 9:00 am signs in at the office before going to class. Parents need to sign out their child (at the office) if leaving during school hours.

General Gordon Elementary School Calendar 2011- 2012

| DESIGNATION | DETAIL |
|---|--|
| SCHOOL OPERATION OVERVIEW | |
| Number of Days in Session | 183 |
| Number of Days of Instruction | 176 |
| Minimum Hours of Instruction in a School Year | Grades k – 7 176 days x 5.01 hours |
| Minutes of Instruction each day in a School Week | Monday to Friday = 301 minutes per day |
| Length of each school day in a School Week | Monday to Friday 9:00 a.m. – 3:01 p.m. |
| Minutes of Operation each day in a School Week | School Open 8:30 to 3:30 |
| Number of School Weeks | 40 |
| Number of Days of Non-Instruction | 6 Non-Instructional Days 1 Administration Day (June 29) |
| Special Provincial Closing Dates and Vancouver School District Closure Days | |
| School Opening Day | Tuesday, September 06 |
| District Closure Day | Friday, October 07 |
| Thanksgiving Day | Monday, October 10 |
| Remembrance Day | Friday, November 11 |
| District Closure Day | Monday, November 14 |
| Last Day of Instruction Before Winter Vacation | Friday, December 16 |
| Winter Vacation Period | Monday, December 19 – Monday, January 2 |
| Schools Re-open after Winter Vacation | Tuesday, January 3 |
| District Closure Day | Friday, February 03 |
| District Closure Day | Monday, February 06 |
| Last Day of Instruction Before Spring Break | Friday, March 09 |
| District Closure Days | Monday, March 12 – Friday, March 16 |
| Spring Break | Monday, March 19 – Friday, March 23 |
| Good Friday | Friday, April 06 |
| Easter Monday | Monday, April 09 |
| District Closure Day | Friday, May 18 |
| Victoria Day | Monday, May 21 |
| Last Full Day of Pupil Attendance | Thursday, June 28 |
| Administrative/School Closing Day | Friday, June 29 |
| Non Instructional Days (school not in session) and Goal Setting Conference Dates | |
| 6 Professional Development Dates | |
| Friday, September 9, 2011 | Professional Development Day #1 Focus: Technology/Social Responsibility |
| Friday, October 21, 2011 | Provincial Professional Development Day #2 Self-Directed |
| Monday, October 31, 2011 | Professional Development Day #3 Focus: Technology |

| | |
|---------------------------------------|--|
| Tuesday, November 1, 2011 | District Professional Development Day #4 Focus: Technology |
| Friday, February 17, 2012 | Professional Development Day #5 Focus: Literacy/Social Responsibility |
| Friday, April 20, 2012 | Professional Development Day#6 Focus: School Plan |
| Goal Setting Conferences Dates | |
| Tuesday, October 11 | Goal Setting Conferences-students dismissed at 2:00 |
| Wednesday, October 12 | Goal Setting Conferences-students dismissed at 2:00 |
| Wednesday, April 4 | Goal Setting Conferences-students dismissed at 2:00 |
| Thursday, June 28 | Goal Setting Conferences-students dismissed at 2:00 |

General Information

Gordon has a bell that rings at **8:55** allowing students **5** minutes to be ready when the learning begins at **9:00**. Outside supervision starts at **8:40** so students can get here early and socialize with friends and prepare for the school day.

Students are asked to dress according to the weather conditions. Warm clothing, coats, and/or rain gear are often necessary for recess and lunch activity. Students are encouraged to enjoy an active recess and lunch outside whenever possible. If the weather is extremely wet and cold, a 'Rainy Day' announcement will be made from the office indicating that students may be in the basement area. Quiet games are provided at 12:30 in the front hallway on really rainy days.

A **45 minute** lunch time is newly scheduled at **12:15 to 1:00 p.m.** All children who eat lunch at school are expected to remain on the school grounds. Children must be accompanied by a parent or authorized adult if they wish to leave the school grounds. There are three supervision aides who supervise during lunch. Students in Grades 1-5 eat in the lunchroom. Grades 6-7 students may eat lunch in the designated basement area. If the classroom teacher chooses to supervise, students may remain in their room to eat lunch.

Traffic Safety

Please note the "NO STOPPING" signs directly in front of the school. Parents are asked to drop students off in the non-congested area near the school. Several "near miss" accidents have occurred on Bayswater/6th Avenue and on 7th Avenue by the east fence of the school. Students are to exercise extreme caution when crossing these or any streets on their way to and from school.

Student Pick-Up

If there is a change in routine – for example, a visiting aunt is to pick up a grade 1 student after school –please send a note or speak with the classroom teacher.

Supervision Before and After School

General supervision is provided each school morning between **8:40 and 8:55 a.m.** Please do not drop children off before this time unless they are: enrolled in Jericho Kids Club; are attending a team practice; or unless prior arrangements have been made. After school, hall and playground supervision is from 3:01 to 3:16 p.m. After this time, children should be home or supervised by a parent or guardian unless attending JKC or a school-sponsored activity. Thank you for your cooperation.

Wheels: Bicycles / Skateboards / Inline Skates / Scooters

Please lock bikes up at the bike rack on the north (6th Avenue) and west (Bayswater) side of the school only. Other areas of the school are out of view and bikes can be more easily damaged or stolen. We ask that students walk their bicycles on and off the school grounds. If skateboards, in-line skates or scooters are brought to school, they are not to be used on the grounds, in the hallways or at lunch. These items should be stored in lockers for the day. Also, scooters should be folded **before** entering the building and remain so until the student has left the grounds after school. **Students may use these on the school grounds after 3:35 pm each day.**

Lost and Found

Lots of clothing, backpacks, lunch kits, etc. are found around the school. These items are placed by the school lost and found rack in the basement. Everyone helps keep it tidy by hanging up clothes as they pass by. At the end of each term, unclaimed items are donated to charity. We recommend that all articles be well-labeled with your child's name.

Use of School Telephone and Payphone

Demand on the use of telephones is high. Student use of the office telephone is restricted to **essential** use (phoning home due to illness, unforeseen circumstances). A pay phone is available for parents and students who wish to use the telephone for personal use.

Cell Phones Staff and students are asked to not use cell phones during school times. If a parent needs to get in contact with a student during school hours we ask that you please phone the office at 604-713-5403.

Student Safety- General Gordon's Code of Conduct

Our school promotes co-operation among children and encourages respect and safety for all. Each student, parent and staff member is expected to be responsible for his/her behaviour and learning. We are committed to providing an environment free of bullying behaviour. General Gordon's Code of Conduct emphasizes choosing to **be Kind, Safe, Fair**.

We work together to:

- resolve conflicts peacefully
- include others
- respect differences
- support each other
- contribute to the classroom and school community

Choose To Be Kind

- √ Care for yourself, others and your world
- √ Be respectful
- √ Include others in your activities
- √ Hold doors open for others
- √ Say "Please" and "Thank you"
- √ Help others
- √ Leave things better than you found them

Choose To Be Safe

- √ Follow adult's instructions
- √ Solve problems with words
- √ Wait your turn
- √ Use equipment appropriately
- √ WALK inside the school (and stay to the right side)
- √ Get help if you need it

Choose To Be Fair

- √ Be helpful to visitors
- √ Stop, look and listen when people talk
- √ Share equipment and materials
- √ Pick up after yourself
- √ Let others play with you
- √ Respect privileges
- √ Follow the rules

Specific behaviour expectations include:

In the hallways

- Walk on the right
- Speak quietly- use whisper voices

In the basement areas

- Play calmly
- Use recycling bins and garbage cans
- Walk and use an 'inside voice'

In the washrooms

- Respect privacy
- Use the paper properly
- Flush
- Wash hands with soap
- Use washroom supplies with care

In the Lunchroom/downstairs eating areas

- Talk quietly
- Sit to eat
- Clean up your lunch area/space before leaving
- Use recycling bins and garbage cans
- In the lunchroom please wait to be dismissed

On the playground

- Use equipment safely
- Stick to time limit

In the Community

- Make way for others-share the sidewalks
- Speak calmly, politely

- Be polite to everyone
- Include others
- Take care of our environment-use garbage cans and keep our grounds litter-free
- Litter free
- Remember you're representing Gordon, yourself and your family

Always try your best

- Complete homework and agenda daily.
- Arrive to class on time. (8:55 bell goes in the morning)
- Bring needed materials to class.
- Present work that is neat, and shows care and effort.
- Persevere with your school work. Try your best even at those times when you are finding it hard learning the material.
- Eat a healthy diet, get plenty of sleep and exercise. Come ready to learn.

Code of Conduct – Choose To Be Kind , Safe and Fair

UNACCEPTABLE: Unkind Behaviour

For example:

- **Hurtful words, sassy backtalk**
- Rude body language
- Excluding others
- Dismissive behaviour ('dissing')
- Any behaviour or communication that discriminates based on race, colour, ancestry, place of origin, religion, marital status, family status, physical or mental disability, sex or sexual orientation.

UNACCEPTABLE: Unsafe Behaviour

For example:

- Harming others
- Pushing, hitting, kicking, etc.
- Running inside
- Sliding, climbing, jumping dangerously
- Lack of cooperation with school staff

UNACCEPTABLE: Unfair Behaviour

For example:

- Disruptive noise
- Littering
- Swearing
- Cheating
- Lying
- Eating / drinking in the halls

Consequences for choosing unkind, unsafe, unfair behaviour are intended to be consistent, preventative, fair, restorative, and may include:

Initial, Minor Infractions:

- A discussion with an adult
- Referral to classroom teacher
- A time out for quiet reflection

Repeated Misbehaviour:

- Infraction recorded
- Loss of privileges e.g. time spent off the playground
- Removal of possession e.g. skateboard
- Staff informed
- Parent informed

Serious Problems- Refusal to change:

- Completion of reflection sheet

- Discussion with administration
- Parents informed- behaviour plan developed
- In school/ out of school suspension

Please refer to www.gordonelementary.ca to view our School Code of Conduct in its complete form.

Contributing to the School and Community: Here are some ways for you to get involved!

Clubs, Sport teams, Service and Leadership

Clubs, athletics, service and leadership groups are sponsored by staff members, and meet weekly or monthly. Opportunities may include drama, fine arts, library and other service leaders, chess, and skipping. Watch for more information on clubs you may wish to join.

Student Council

Each class selects one or two class representatives. Student Council meets monthly to discuss and plan social events for students and deal with student issues and requests that are raised in classes and brought to the council by the class representative/s. The student council is sponsored by the Principal and a staff member.

Inter-School Games .N.B. Not all sports are offered each year

Students may have the opportunity to be involved in a variety of sports throughout the year, depending upon teacher-sponsors and coaches available. The VSB District Inter-School sports schedule is as follows:

| | | |
|-----------------------|------------------------|--|
| Cross Country Running | September/October | Students in K-7 are welcome to train and compete |
| Soccer | September/October. | Students in Grades 6-7 eligible |
| Volley ball | October/Early December | Students in Grades 6-7 eligible |
| Basketball | December/March. | Students in Grades 6-7 eligible |
| Badminton | Spring. | Students in Grades 6-7 eligible |
| Track and Field | May. | Students in Grades 3-7 eligible |

School Traditions

Welcome to School BBQ:At the beginning of the school year an evening BBQ is held as a venue for parents to meet their child's teacher, as well as other VSB and community groups that may work with your child. This is also an opportunity for new families to meet and returning families to reconnect.

Winter Concert and Craft Fair:The music teacher coordinates a concert performed by all the classes in the school. The accompanying winter fair gives students a venue to sell their home made jewelry, cards and other gifts.

Talent Show: Each year students have the opportunity to share their talents. Some examples include karate, instrumental, gymnastics, voice, dance and drama.

Spring Fling: The Spring Fling is springtime fair, with games, plant sale, flea market, an auction, food and crafts. It is a community celebration, as well as a PAC fundraiser.

Sports Day: Sports Day is usually the Friday immediately before the Victoria Day weekend.

Beach Day :This active celebration for the entire school is held during the last week of classes in June at Jericho Beach, weather permitting.